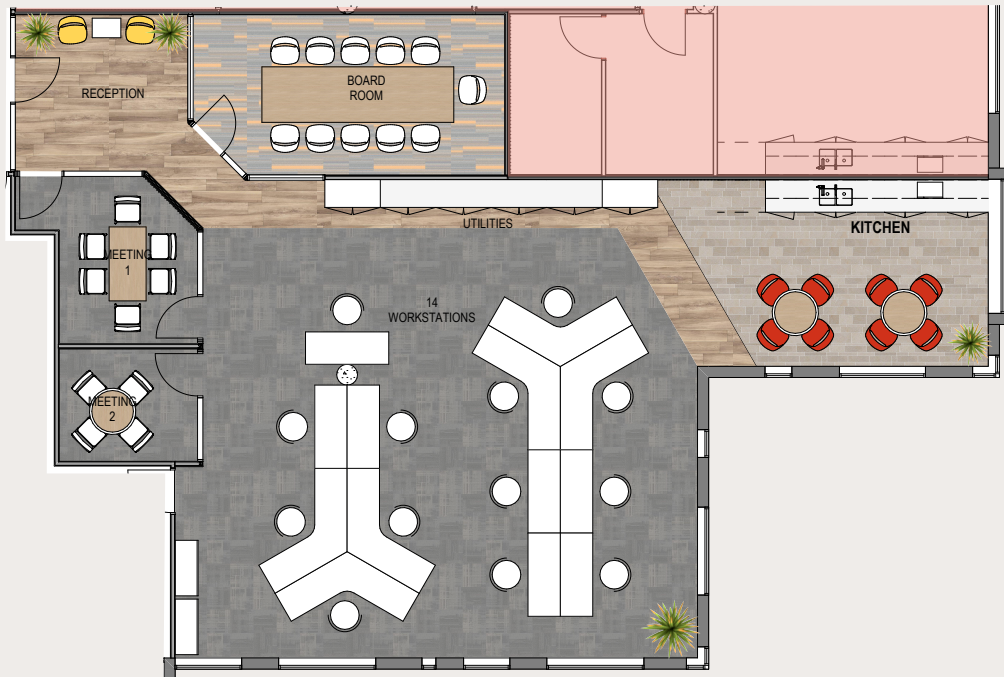
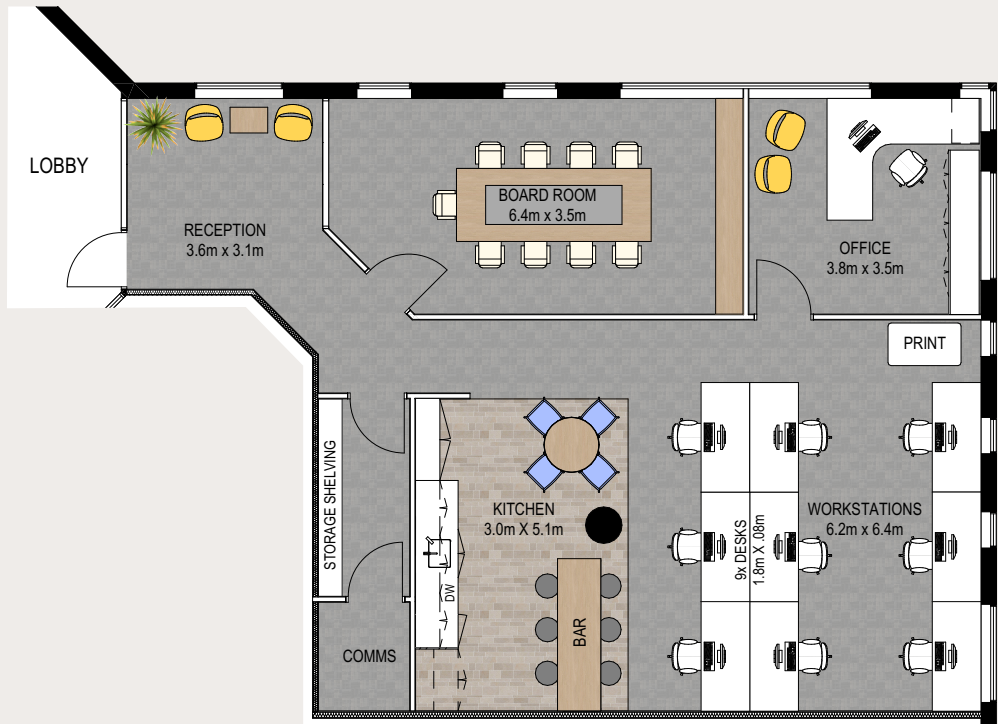


–Flexible floorplates tailored  
to your precise needs –

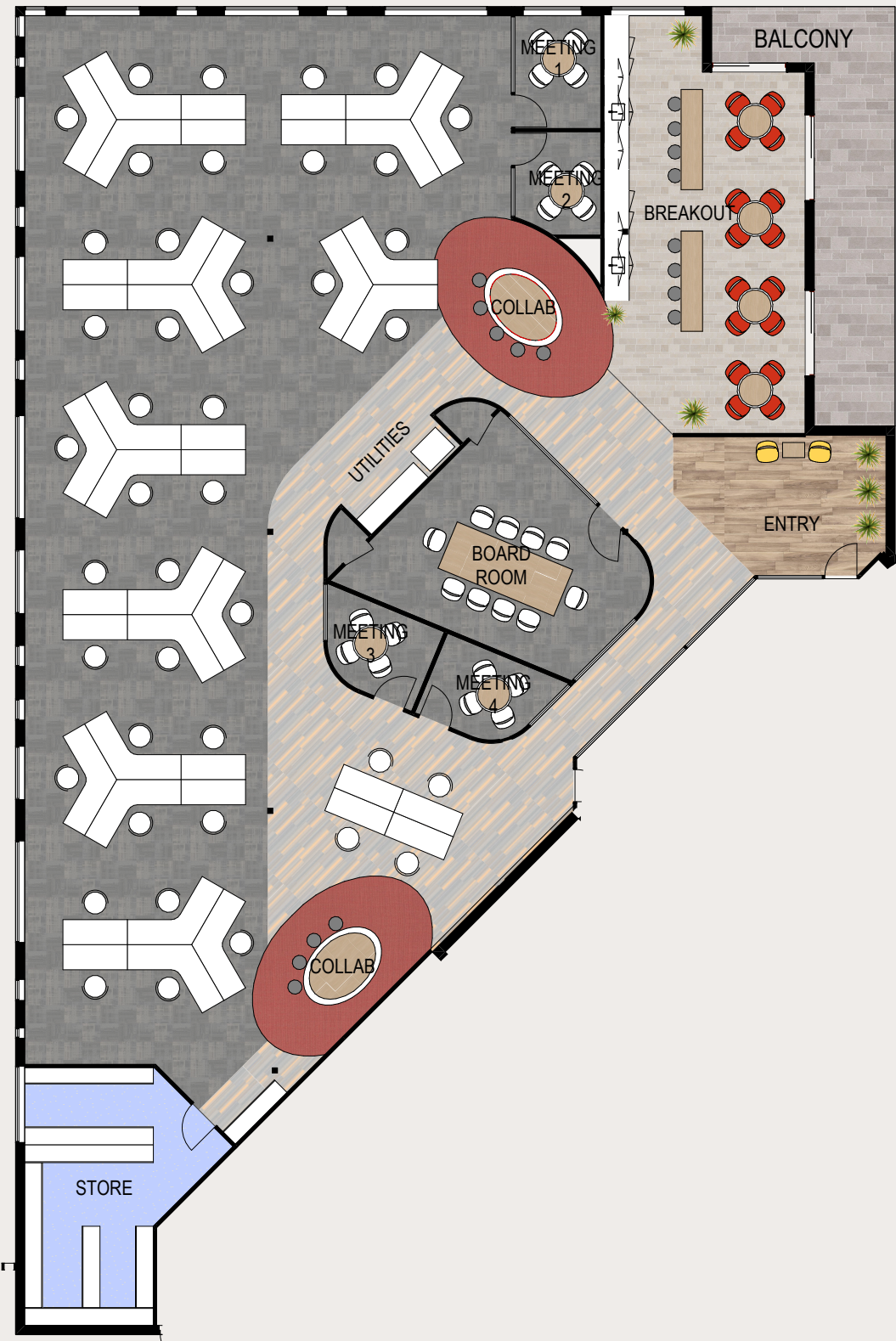


Building 2, Level 1: 197m<sup>2</sup>, Test Fit Ratio: 1:15m<sup>2</sup>



Building 5, Level 1: 121m<sup>2</sup>, Test Fit Ratio: 1:12m<sup>2</sup>

–Flexible floorplates tailored  
to your precise needs –



Building 5, Level 3: 614m<sup>2</sup>, Test Fit Ratio: 1:14m<sup>2</sup>